

Previous Area Plans and Studies

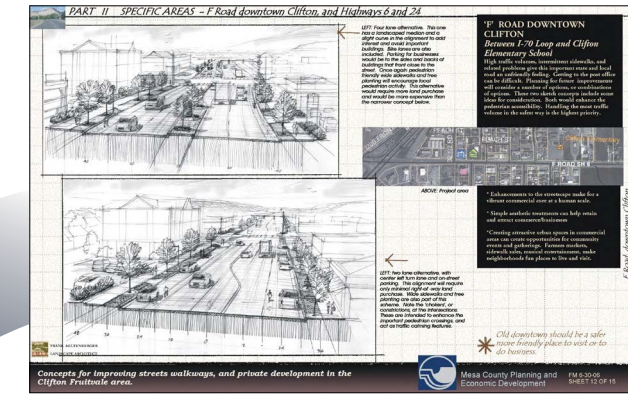
There have been many studies near the US 6 corridor and within the surrounding Clifton area. The US 6 Clifton Transportation Study will consider the recommendations from these studies while developing transportation improvement alternatives.

Draft Grand Valley 2040 Regional Transportation Plan (2014)



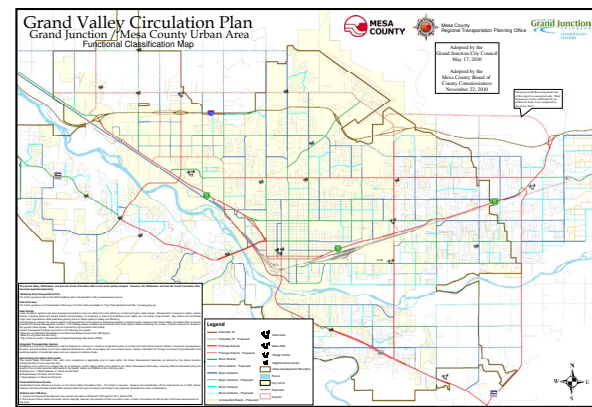
Transportation Vision

Clifton-Fruitvale Community Plan (Amended 2011)



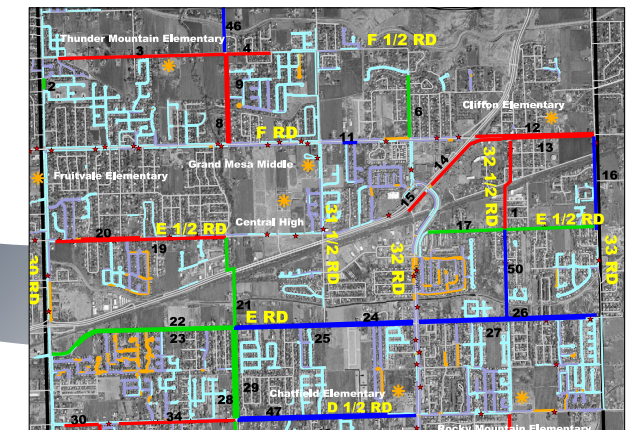
Urban Planning

Grand Valley Circulation Plan (2010)



Roadway Planning

Clifton Pedestrian Circulation Study (2006)



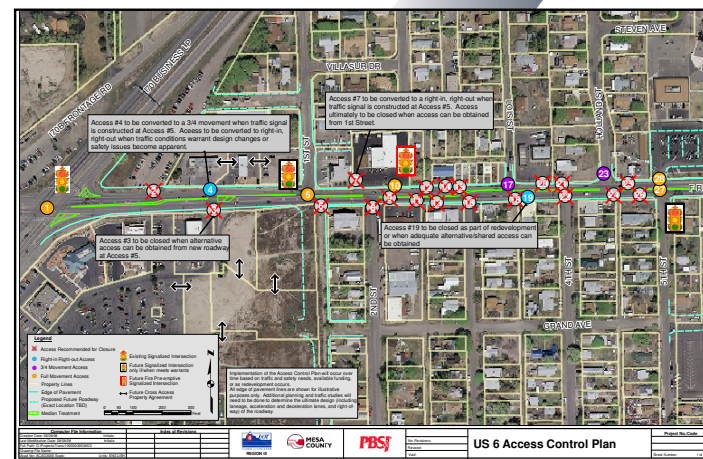
Multimodal Planning

CDOT CO US 6 Clifton Transportation Study

Access

Community Vision

US Highway 6 – Clifton Access Control Plan (2008)



Old Town Clifton Plan (2007)

